

UPGRADING YOUR TR-6000 SERIES FIRMWARE

Before applying Build TR6-3.6.7Rt your radio must be running Build 84 or higher.



Warning: Before applying any versions of firmware please read and understand this entire document. If you encounter problems with the new firmware you can seek help from the Support Team. You should only perform a firmware upgrade during supported hours (7am to 5pm PST, Monday to Friday) in case you need emergency assistance. If you have any questions, please call or email us before starting the upgrade process. It is advised that network administrators document their configuration before proceeding with the update, then after the upgrade manually re-enter the information if required.

Important: Firmware may become unusable if inappropriately applied or the connection is broken during the upgrade. Ensure no interruption during upgrade. If the connection is broken or power goes off during upgrade, the unit may become inoperative! **Once this package is applied, you can not revert to earlier versions!**

This package contains the following:

Firmware

TR6-3.6.7Rt.bin

Documents

Upgrading your Firmware build 3.6.7, Release Notes.pdf (this document)
General Firmware Changes.pdf.

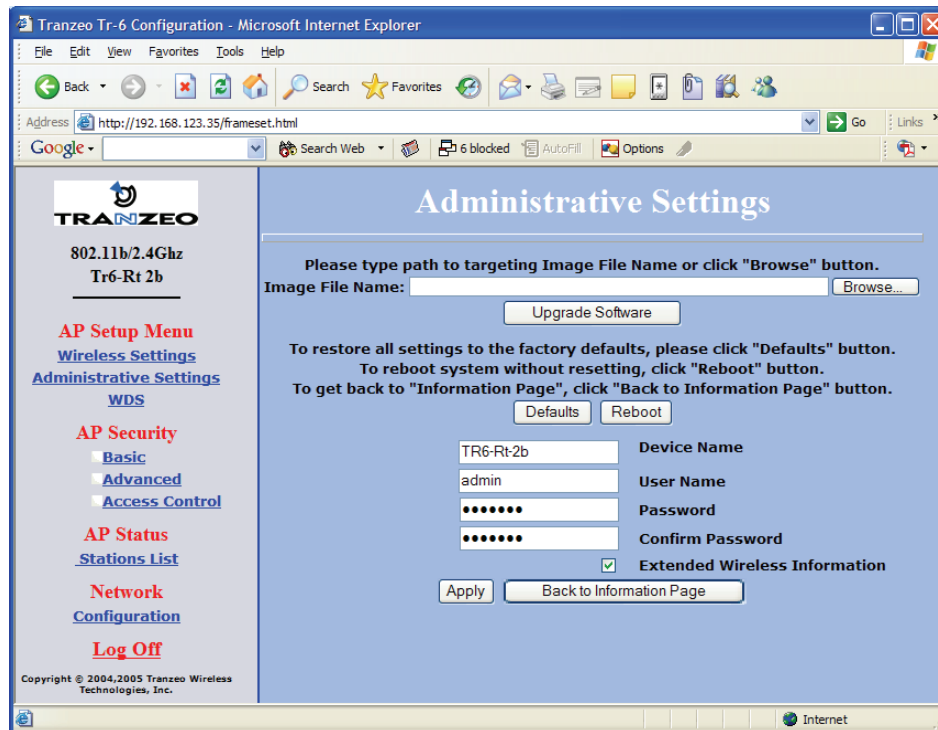
MIBs

tranzeo.MIB Private MIB for Tranzeo Wireless radios running 3.3.0 or higher, V0.2

UPGRADING YOUR TR-6000 SERIES FIRMWARE

Upgrading the TR-6000 firmware to Build TR6-3.6.7Rt

1. Log into the radio and go to the *Administrative Settings* page.



2. Click *Browse* to browse to the location of the upgrade file **TR6-3.6.7Rt.bin**. Then click the upgrade software button to apply the firmware. The radio will upgrade the firmware and then reboot. All the LEDs including the Power LED will go blank during the upgrade for up to 30 seconds. This is normal.
3. Your Radio is now upgraded and will continue to pass traffic after it reboots.

See the next page for Release Notes

UPGRADING YOUR TR-6000 SERIES FIRMWARE

Changes in 3.6.7

UI

- 1) Added UI warning to ensure operator selects correct country.

Radio & Wireless

- 1) Improved compatibility with third-party vendors when using WPA2-Only Mode.
- 2) CPE now send a disassociation frame to the AP if rebooted from the web GUI.

Network

- 1) Added stale PPPoE session detection.
- 2) Added PPPoE keep-alive function to keep sessions active.

Regulatory

- 1) All countries with the exception of the USA and Puerto Rico are now in the new World Domain. The World Domain allows international operators to select the radios country of operation. US and Puerto Rican users stay within the American Domain.

For past firmware changes please see the General Firmware Changes document.